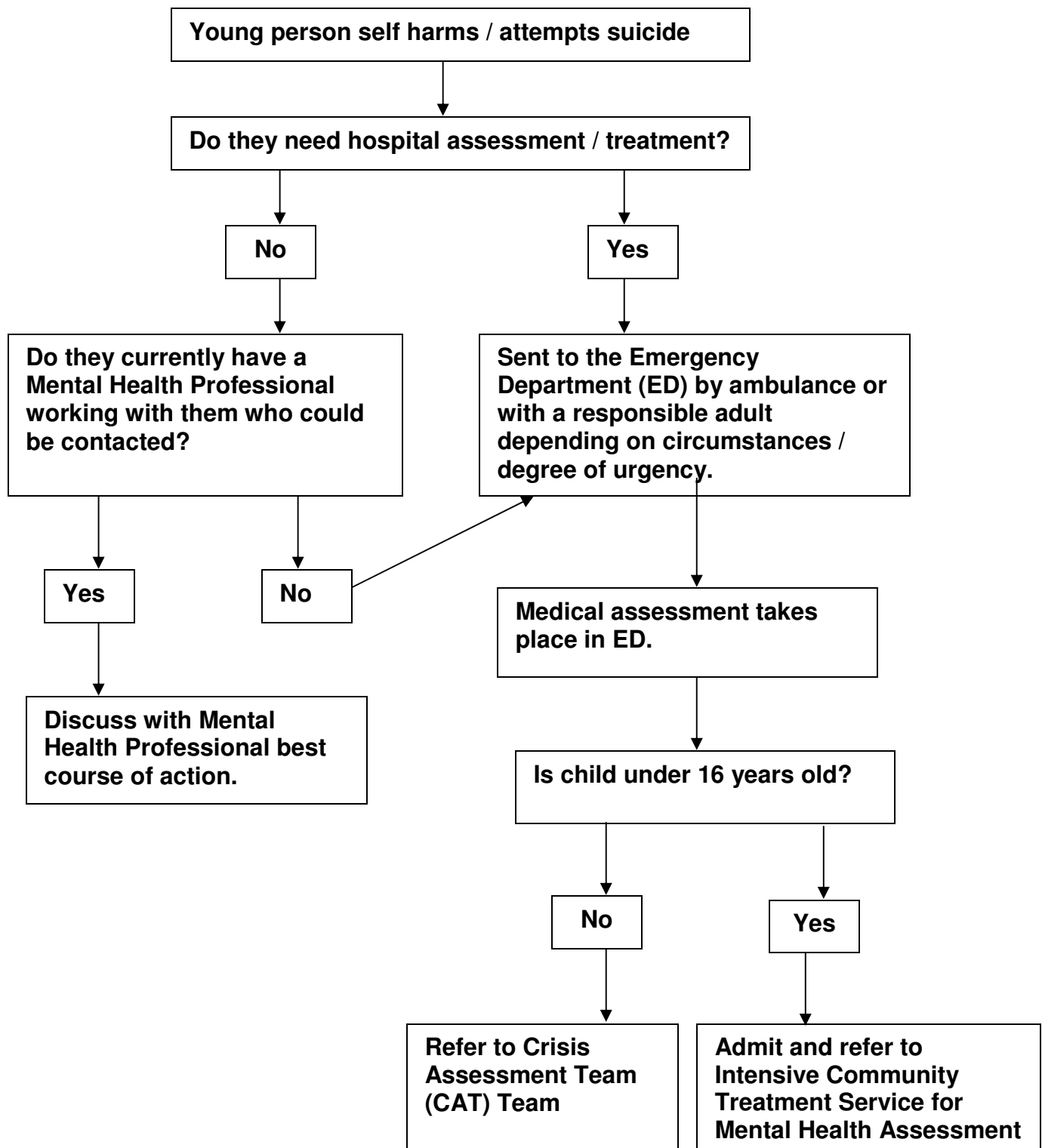


## Flow chart for Self Harm in young people under 18 years of age in Newcastle upon Tyne



**Note:** If child self discharges and their medical situation is life threatening discuss with Consultant Paediatrician / Psychiatrist on call and involve Children's Social Care and Police. If child self discharges before Mental Health Assessment, Mental Health Services will follow up in the community.

**Note:** All children self harming should have Trust Cause for Concern forms completed and sent to the Safeguarding Children's Nursing Team, some children may need a referral to Children's Social Care also, the timing of this will depend on each individual case.